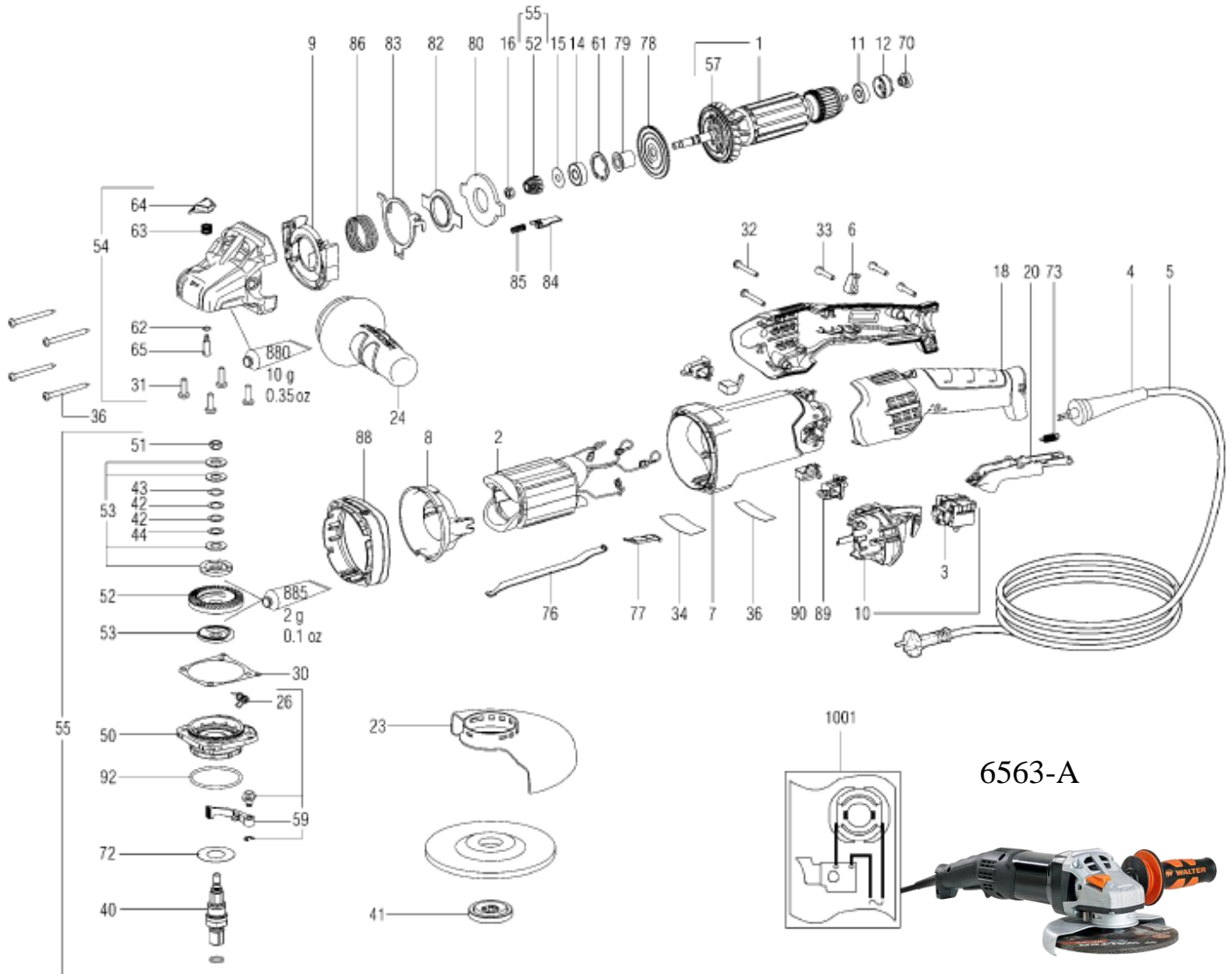


## IRONMAN PS 6563-A (30-A 563) Exploded view / Vue Explosée



### Parts List / Liste de pièces

| Part Number # | Quantity | Description EN           | Description FR                     | Order # |
|---------------|----------|--------------------------|------------------------------------|---------|
| 1             | 1        | ARMATURE COMPLETE        | ROTOR COMPLET                      | 48M684  |
| 2             | 1        | FIELD COIL               | INDUCTEUR 110V                     | 48M664  |
| 3             | 1        | SWITCH 2-POLE            | INTERRUPTEUR, 2-POLE X2            | 48M804  |
| 4             | 1        | CABLE SLEEVE             | MANCHON DE CABLE                   | 48M632  |
| 5             | 1        | CORD SET-SJ 14/2         | CABLE COMPLETE-SJ 14/2             | 48Z218  |
| 6             | 1        | CABLE CLAMP              | BRIDE DE CABLE                     | 48M366  |
| 7             | 1        | MOTOR HOUSING            | BOITIER DU MOTEUR                  | 48M792  |
| 8             | 1        | BAFFLE                   | DIFFUSEUR                          | 48M688  |
| 9             | 1        | BAFFLE                   | DIFFUSEUR                          | 48M548  |
| 10            | 1        | ELECTRONIC UNIT W/SWITCH | UNITE ELECTRIQUE AVEC INTERRUPTEUR | 48M737  |
| 11            | 1        | BALL BEARING             | ROULEMENT À BILLES                 | 48Q260  |
| 12            | 1        | RUBBER BUSHING           | BOITE EN CAOUTCHOUC                | 48L226  |
| 13            | 1        | WASHER                   | RONDELLE                           | 48K135  |

|      |   |                            |                                      |        |
|------|---|----------------------------|--------------------------------------|--------|
| 14   | 1 | Ball bearing, 8x22x7       | Roulement billes, 8x22x7             | 48Q263 |
| 15   | 1 | SPACER RING                | BAGUE D'ÉCARTEMENT                   | 48K203 |
| 16   | 1 | HEX NUT                    | ECROU HEXAGONAL                      | 48K423 |
| 18   | 1 | HANDLE 2 PARTS             | POIGNEE 2 PIECES                     | 48M793 |
| 20   | 1 | SWITCH TRIGGER COMPLETE    | POUSSOIR D'INTERRUPTEUR COMPLET      | 48M794 |
| 23   | 1 | WHEEL GUARD                | PROTEGE-MEULE                        | 48M667 |
| 24   | 1 | ANTI-VIBRATION HANDLE, M8  | POIGNEE LATERALE ANTI-VIBRATION      | 30B075 |
| 26   | 1 | SPRING CLIP                | RESSORT A BRANCHES                   | 48L245 |
| 30   | 1 | GASKET                     | JOINT                                | 48M560 |
| 31   | 4 | SCREW                      | VIS                                  | 48S012 |
| 32   | 6 | SCREW BZ4.2X32 DIN 7981    | VIS BZ4.2X32 DIN 7981                | 48S743 |
| 33   | 3 | SCREW                      | VIS                                  | 48S747 |
| 34   | 1 | RATING PLATE               | PLAQUE D'IDENTIFICATION              | 48M798 |
| 36   | 1 | WARNING LABEL              | ETIQUETTE D'AVERTISSEMENT            | 48M570 |
| 40   | 1 | SPINDLE COMPL.             | ARBRE COMPLET                        | 48M660 |
| 41   | 1 | CLAMPING NUT COMPL., 5/8"  | ECROU DE SERRAGE COMPL. 5/8"         | 30B020 |
| 42   | 2 | WASHER                     | RONDELLE                             | 48K163 |
| 43   | 1 | SPACER                     | PIECE D'ECARTEMENT                   | 48L075 |
| 44   | 1 | SPACER                     | PIECE D'ECARTEMENT                   | 48L093 |
| 50   | 1 | FLANGE COMPL.              | BRIDE COMPLET                        | 48M576 |
| 51   | 1 | NUT                        | ECROU                                | 48K426 |
| 52   | 1 | BEVEL GEAR W/PINION        | ROUE CONIQUE AVEC PIGNON             | 48M671 |
| 53   | 1 | FRICTION WASHER SET COMPL. | DISQUE DE FRICTION COMPLETE          | 48K429 |
| 54   | 1 | GEAR HOUSING COMPL.        | BOITE D'ENGRENAGE COMPL.             | 48M674 |
| 55   | 1 | SAFETY CLUTCH W/PINION     | DEBRAYAGE DE SECURITE                | 48M800 |
| 57   | 1 | FAN W/DUST GUARD           | VENTILATEUR A CORBEILLE PROTOUSSIERE | 48M648 |
| 59   | 1 | CLAMPING LEVER COMPL.      | LEVIER DE SERRAGE COMPLET            | 48M596 |
| 70   | 1 | TACHO DISC                 | DISQUE CONTROL VITESSE               | 48M649 |
| 72   | 1 | WASHER                     | RONDELLE                             | 48K432 |
| 73   | 1 | PRESSURE SPRING            | RESSORT DE PRESSION                  | 48M795 |
| 75   | 1 | O-RING                     | JOINT EN O                           | 48M603 |
| 76   | 1 | SHIFT ELEMENT              | ELEMENT DE LEVIER                    | 48M805 |
| 77   | 1 | SHIFT ELEMENT              | ELEMENT DE LEVIER                    | 48M806 |
| 80   | 1 | BUTTING PLATE              | PLAQUE DE BUTEE                      | 48M705 |
| 82   | 1 | SUPPORTING PLATE           | PLAQUE DE SUPPORT                    | 48M729 |
| 83   | 1 | SHIFT LEVER                | LEVIER DE COMMANDE                   | 48M730 |
| 84   | 1 | SHIFT ELEMENT              | DISPOSITIF DE COMMUTATION            | 48M732 |
| 85   | 1 | PRESSURE SPRING            | RESSORT DE PRESSION                  | 48M734 |
| 86   | 1 | PRESSURE SPRING            | RESSORT DE PRESSION                  | 48M739 |
| 88   | 1 | INTERMEDIATE FLANGE        | COUVERCLE INTERMEDIARE               | 48M742 |
| 89   | 1 | BRUSH HOLDER SET           | SUPPORT DE BROSSE                    | 48M801 |
| 90   | 1 | CARBON BRUSH SET           | ENSEMBLE DE BROSSES AU CARBONE       | 48M802 |
| 92   | 1 | O-RING                     | JOINT EN O                           | 48M604 |
| 880  | 1 | GREASE 100 G               | GRAISSE 100 G                        | 48Z346 |
| 885  | 1 | CLUTCH ASSY LUBRICANT 50G  | LUBRIFI-DISP/DEBRAYAGE 50G           | 48Z379 |
| 1001 | 1 | DIAGRAM                    | DESSIN                               |        |